

Geophysical Technology Limited
ABN 49 072 470 243

Suite 1A Level two
802 Pacific Highway
Gordon NSW 2072
Australia
Tel +61 (2) 9844 5413
Fax +61 (2) 9844 5445
Email: info@g-tek.biz
Website: www.g-tek.biz



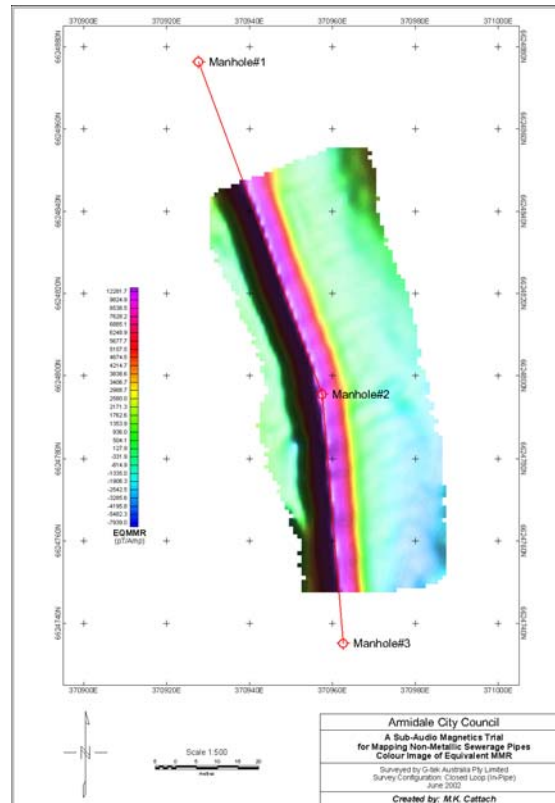
BETTER BY DEFINITION

BETTER by DEFINITION

Specialising in:

- explosive ordnance detection and remediation
- minerals exploration
- project management
- environmental geoscience
- engineering geoscience

SAM FOR UNDERGROUND UTILITIES DETECTION



The use of G-tek's patented SAM technology can be applied to a large variety of metallic and non-metallic underground pipes. SAM provides 100% detection of pipes where two ends are known, but the location is otherwise unknown, even in areas where there is a lot of ambiguity from other pipes, ducts, cables and geological interference. This applies to sewer, water, gas, electrical, telephone, petroleum and chemical pipes, ducts and cables of any size and length.

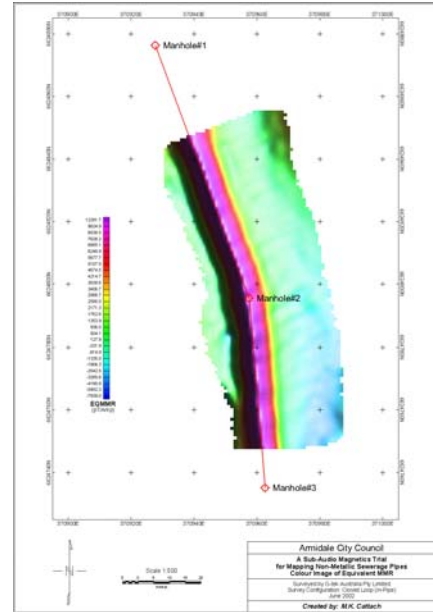
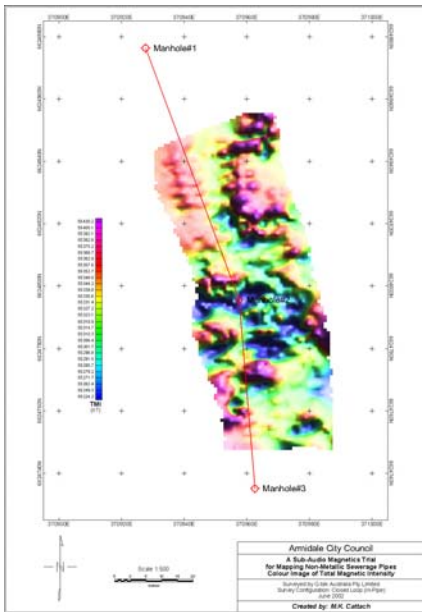
SAM can also be used for pipes where only one end is known.

© Geophysical Technology Limited, 1999, 2003
BRISBANE
3/10 Hudson Road
Albion Qld 4010 Australia
Tel +61 (0)7 3862 2588
Fax +61 (0)7 3862 3418

ARMIDALE
PO Box U9
Armidale NSW 2351 Australia
Tel +61 (0)2 6773 3927
Fax +61 (0)2 6773 3307

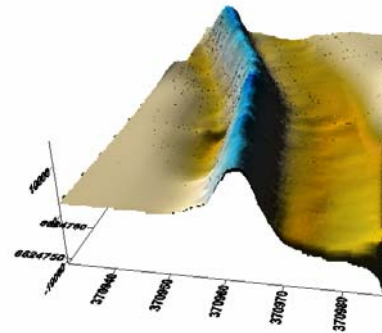
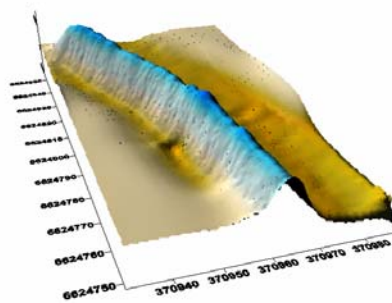
SUNSHINE COAST
PO Box 2002
Buddina Qld 4575 Australia
Tel +61 (0)7 5493 8577
Fax +61 (0)7 5493 7405

An example of a ceramic gravity line sewer pipe buried at 4 metres collocated with numerous steel pressure mains, a pump station, steel storm water culverts and surface structures.



Worlds Highest Definition
 Total Field Magnetism

G-tek's Proprietary Sub-Audio Magnetics (SAM)*
 Technology



3D Modelling of G-tek's Sub-Audio Magnetics (SAM)* Data

SAM Unambiguously & Precisely Locates the Pipe!

Underground Utilities Mapping

World Leaders in High Definition Sub-Surface Imaging

*Subject to International Patents