

**Geophysical Technology Limited**  
ABN 49 072 470 243

Suite 1A Level two  
802 Pacific Highway  
Gordon NSW 2072  
Australia  
Tel +61 (2) 9844 5413  
Fax +61 (2) 9844 5445  
Email: info@g-tek.biz  
Website: www.g-tek.biz



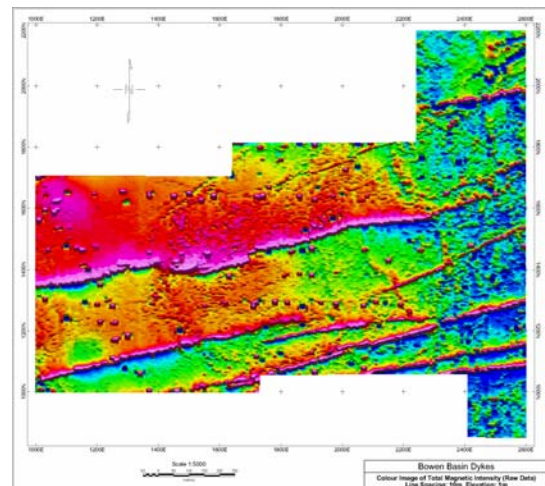
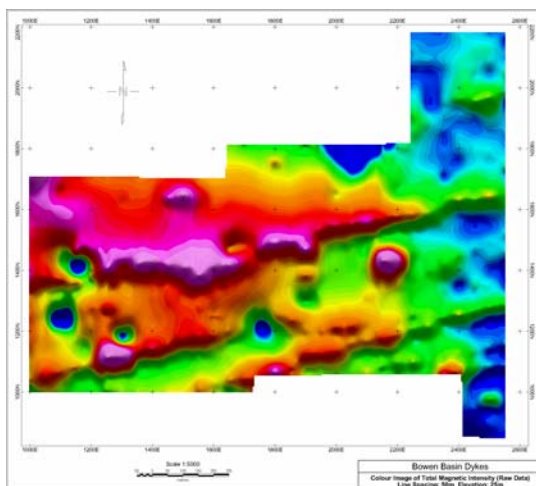
**BETTER BY DEFINITION**

Specialising in:

- explosive ordnance detection and remediation
- minerals exploration
- project management
- environmental geoscience
- engineering geoscience

# BETTER by DEFINITION

## IMAGINE THE DIFFERENCE

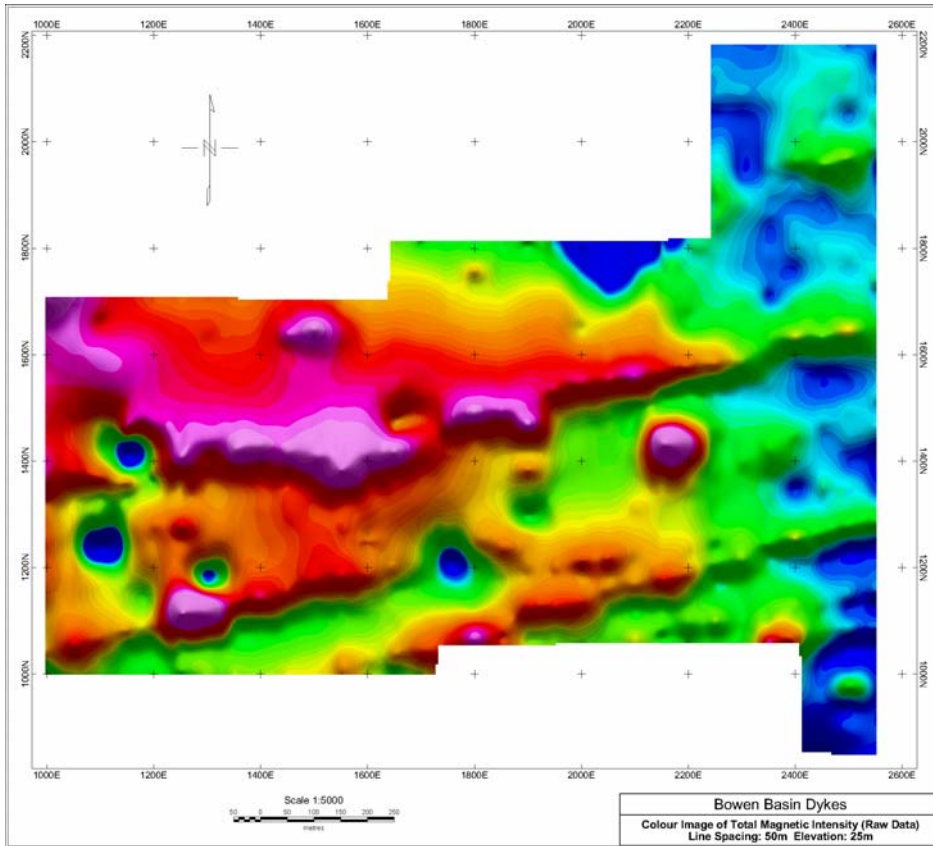


**The definition obtained from geophysics is inversely proportional to the distance the sensors are from the geological structure of interest. While large structures can often be detected from airborne surveys, the detail obtained from G-tek's ultra-high definition ground-based surveys adds immeasurably to the understanding of the underlying geology – especially the unweathered surface below sediments.**

© Geophysical Technology Limited, 1999, 2003  
**BRISBANE**  
3/10 Hudson Road  
Albion Qld 4010 Australia  
Tel +61 (0)7 3862 2588  
Fax +61 (0)7 3862 3418

**ARMIDALE**  
PO Box U9  
Armidale NSW 2351 Australia  
Tel +61 (0)2 6773 3927  
Fax +61 (0)2 6773 3307

**SUNSHINE COAST**  
PO Box 2002  
Buddina Qld 4575 Australia  
Tel +61 (0)7 5493 8577  
Fax +61 (0)7 5493 7405



**Magnetic Intensity from a flying height of 25 metres**

**Magnetic Intensity from a G-tek Ultra High Definition survey with sensor height 1 metre above the ground.**

**The definition of the underlying dykes is clear and precise.**

